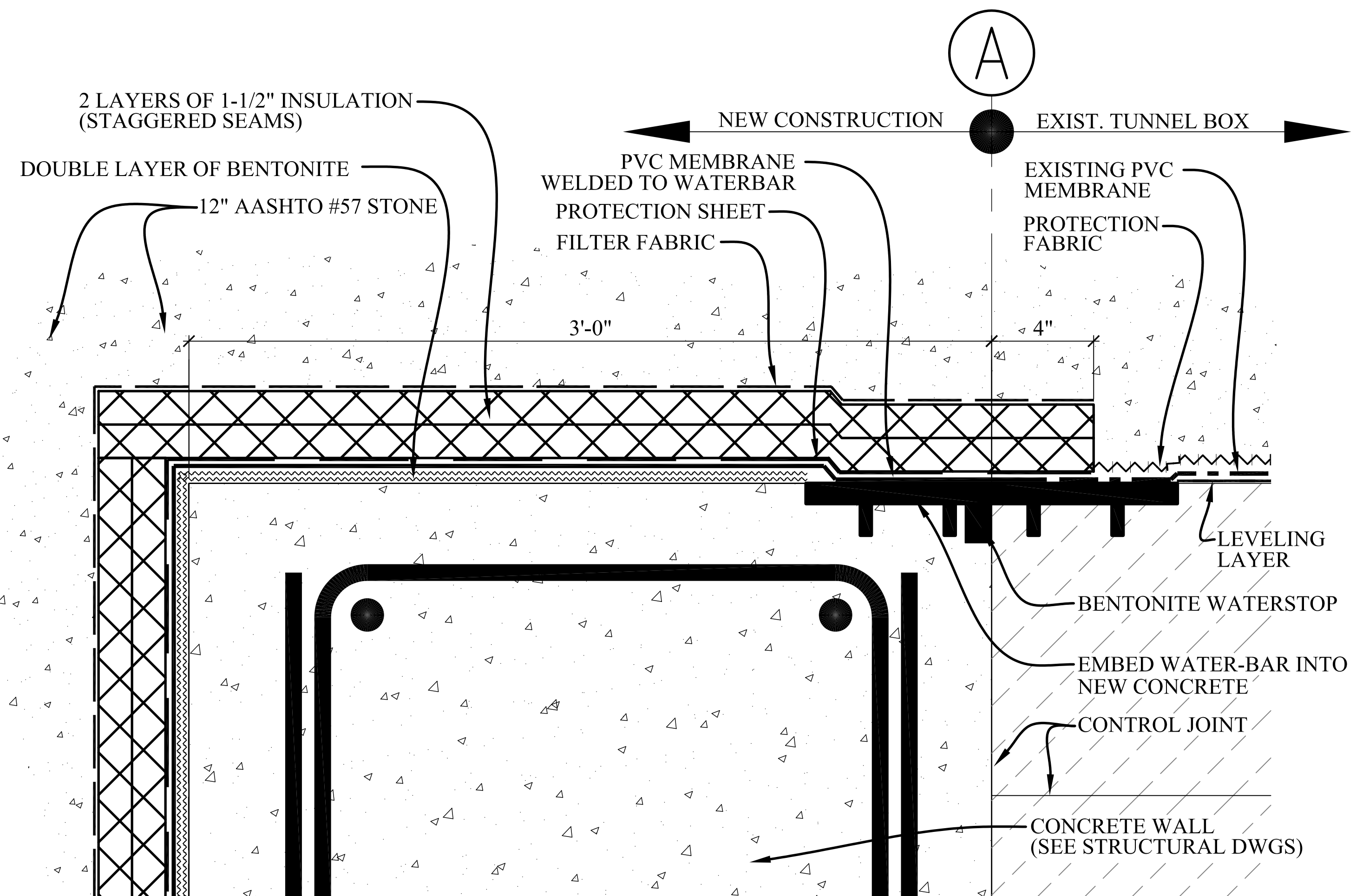
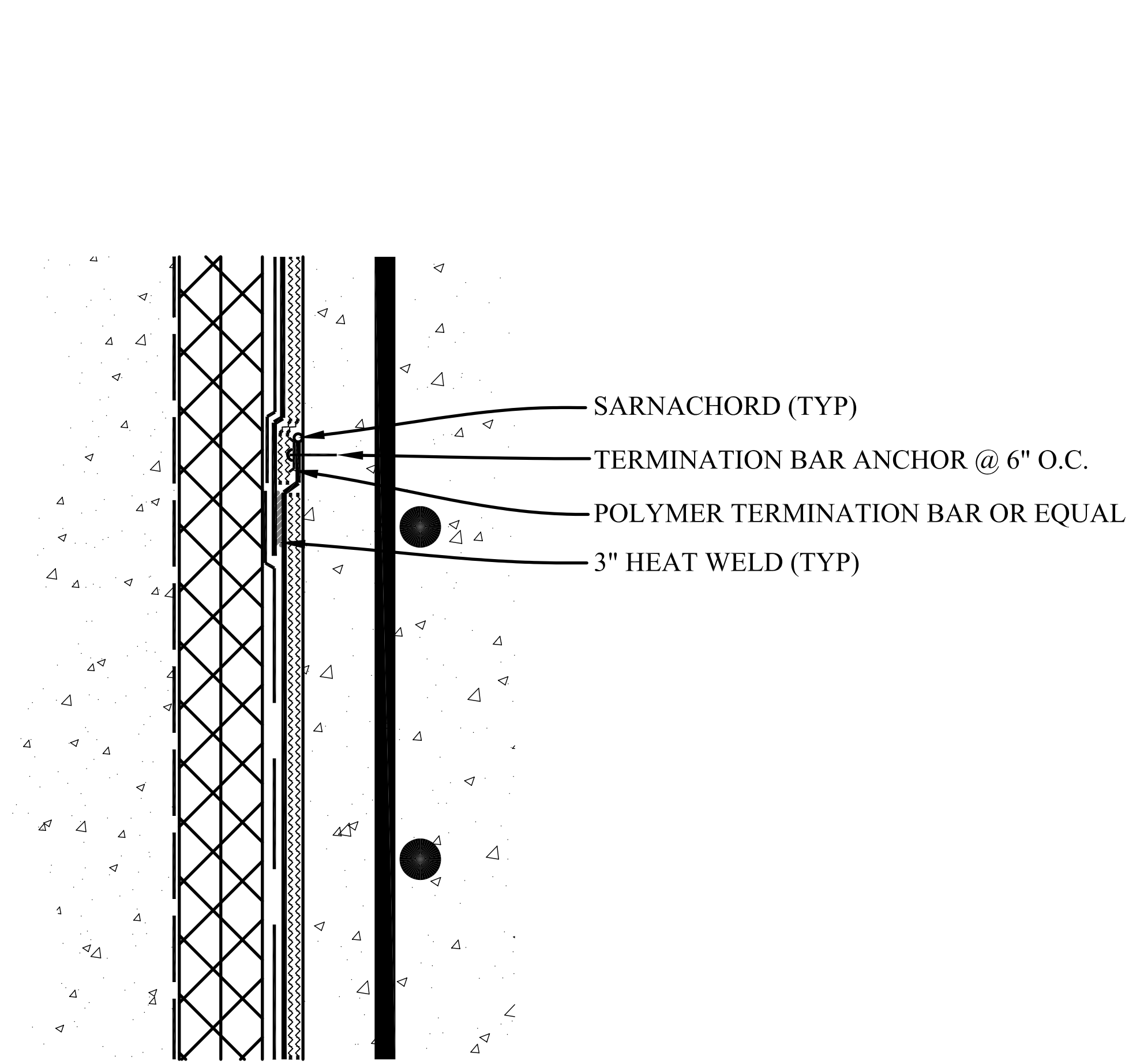


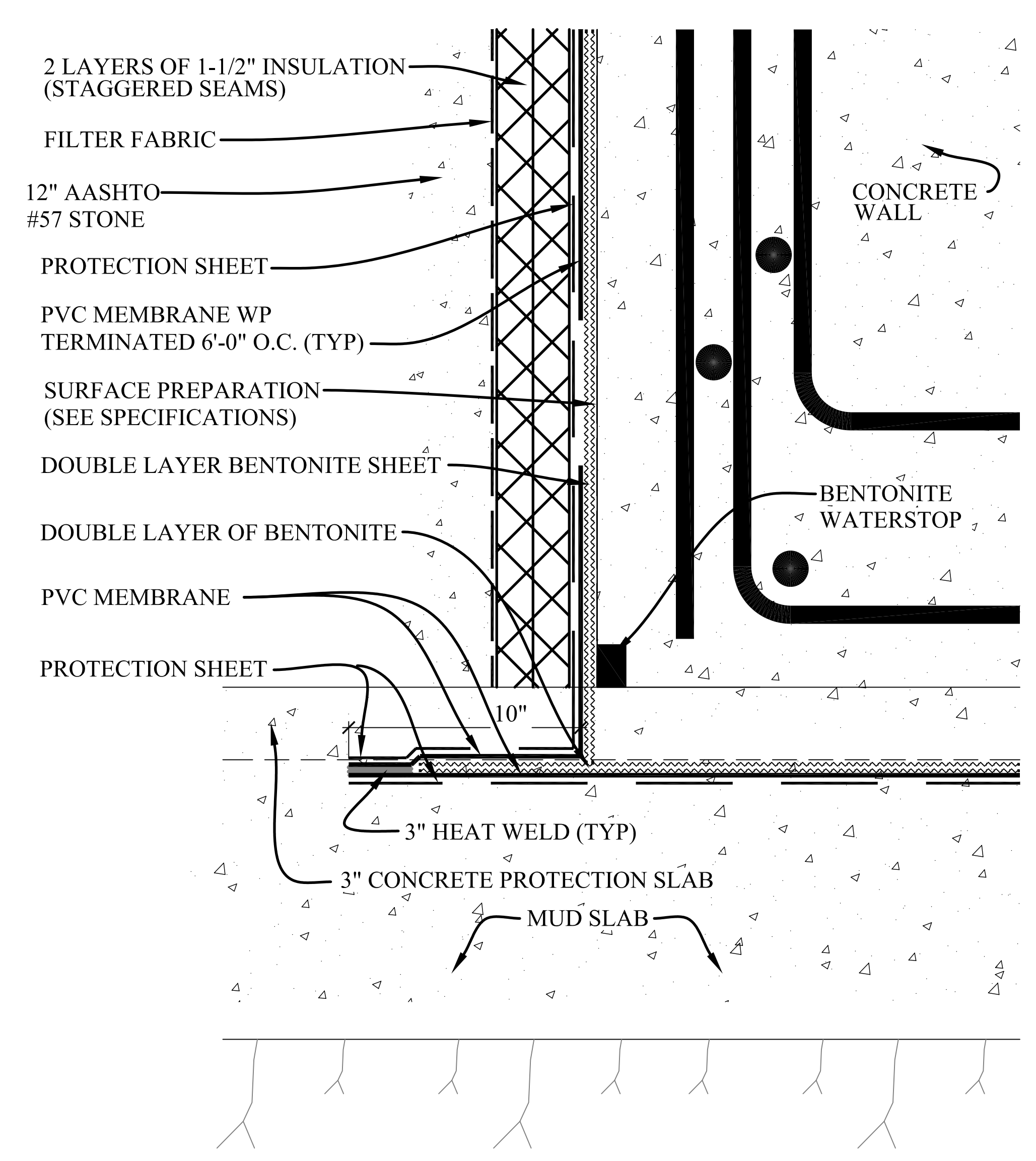
5 SECTION DETAIL AT TIE-IN TO EXISTING TUNNEL
SC08.0001 SCALE: 3"=1'-0"



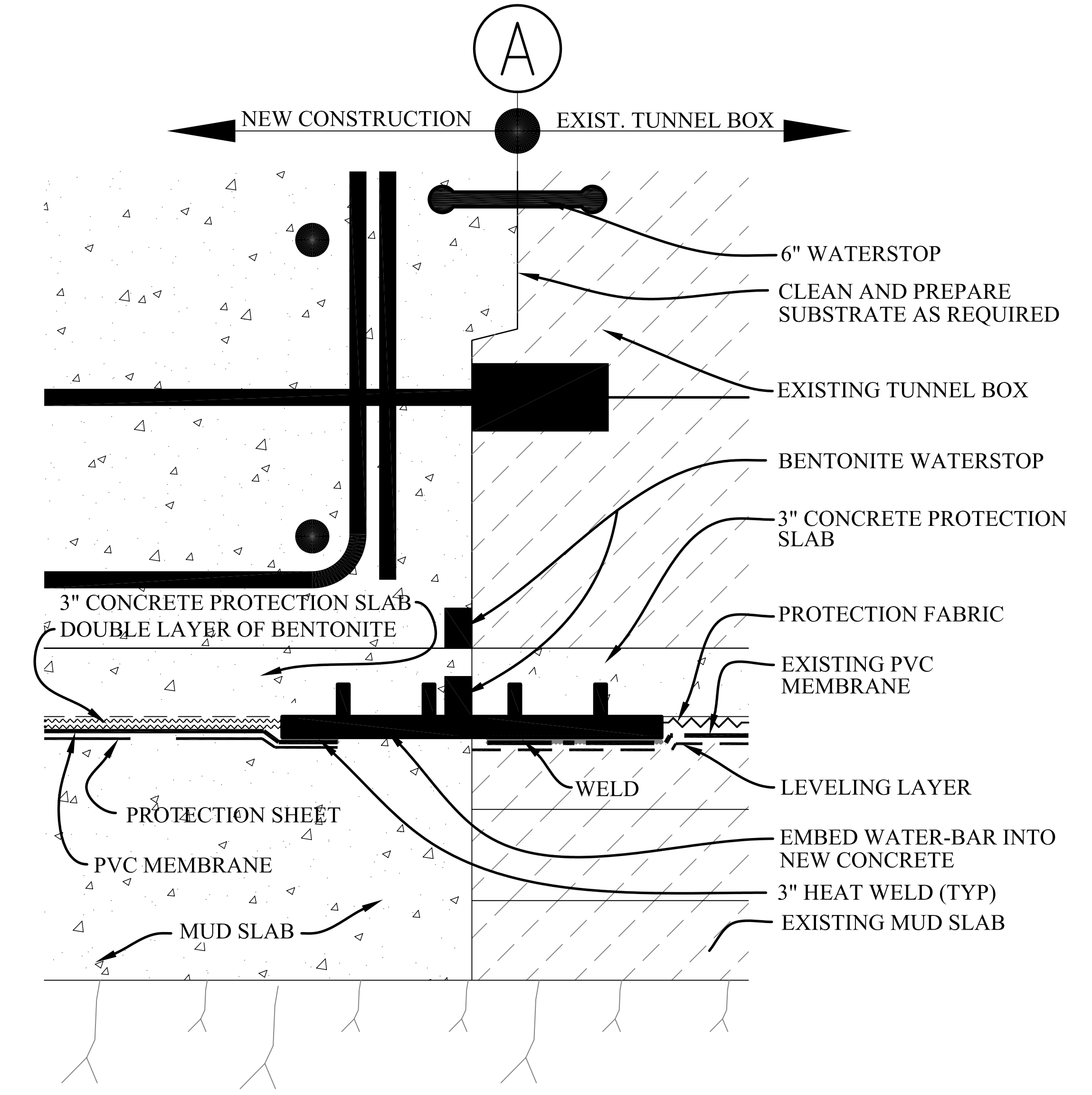
3 PLAN AND SECTION DETAIL AT END OF WALL
SC08.0001 SCALE: 3"=1'-0"



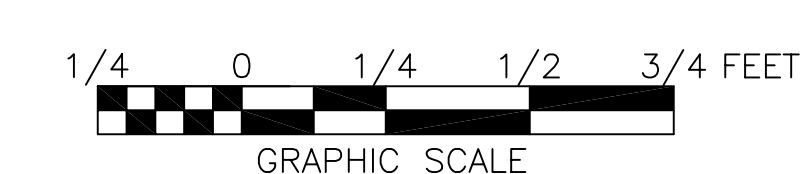
4 DETAIL AT SEAM
SC08.0001 SCALE: 3"=1'-0"



2 DETAIL WATERPROOFING SECTION AT BASE OF TUNNEL CLOSURE WALL
SC08.0001 SCALE: 3"=1'-0"



1 DETAIL WATERPROOFING SECTION AT BASE OF TUNNEL CLOSURE WALL
SC08.0001 SCALE: 3"=1'-0"

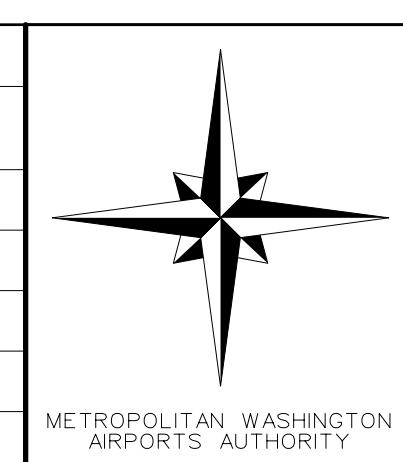


NO.	REVISION	DATE

KPF
Kohn Pedersen Fox Associates PC
111 West 57th Street
New York, NY 10019
Telephone 212 977-6500

URBAN
URBAN ENGINEERS, INC.
530 WALNUT ST., 14TH FL.
PHILADELPHIA, PA 19106
TELEPHONE 215-922-8080

DATE NOV. 16, 2009
SCALE 3" = 1'-0"
DESIGNED BA
CHECKED CGG/DRAWN FYC
ACCEPTED MT
SUBMITTED DRH
APPROVED FDH



METROPOLITAN WASHINGTON AIRPORTS AUTHORITY
OFFICE OF ENGINEERING DESIGN DEPARTMENT

TIER 3 NORTHEAST APRON EARLY SITEWORK PACKAGE
WASHINGTON DULLES INTERNATIONAL AIRPORT
WASHINGTON, D.C.
WATERPROOFING DETAILS

PROJECT IDENTIFIER IL0109
SHEET NAME SC08.0001
VOLUME NUMBER 1 of 1
SHEET NUMBER 13 of 13