

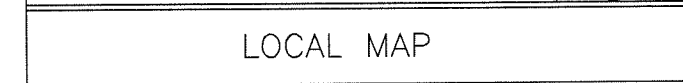
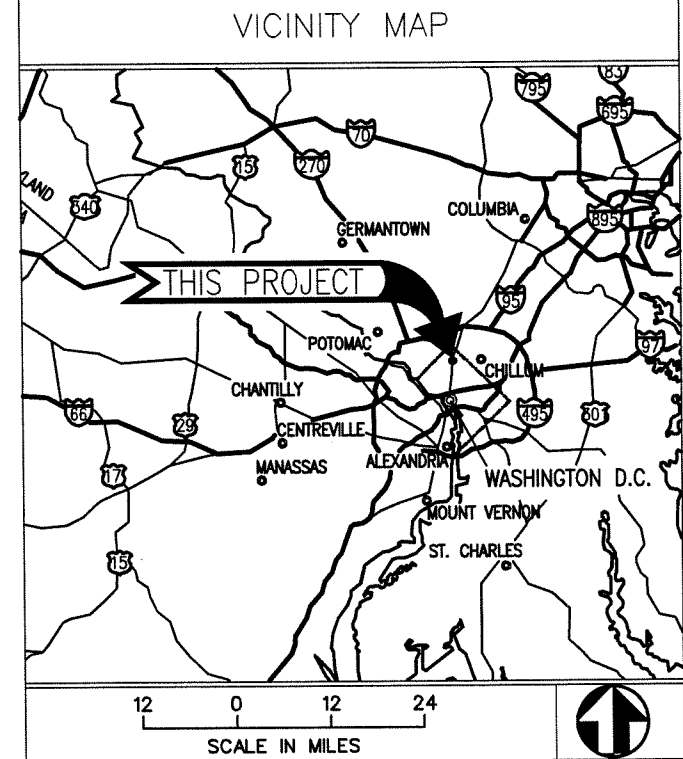
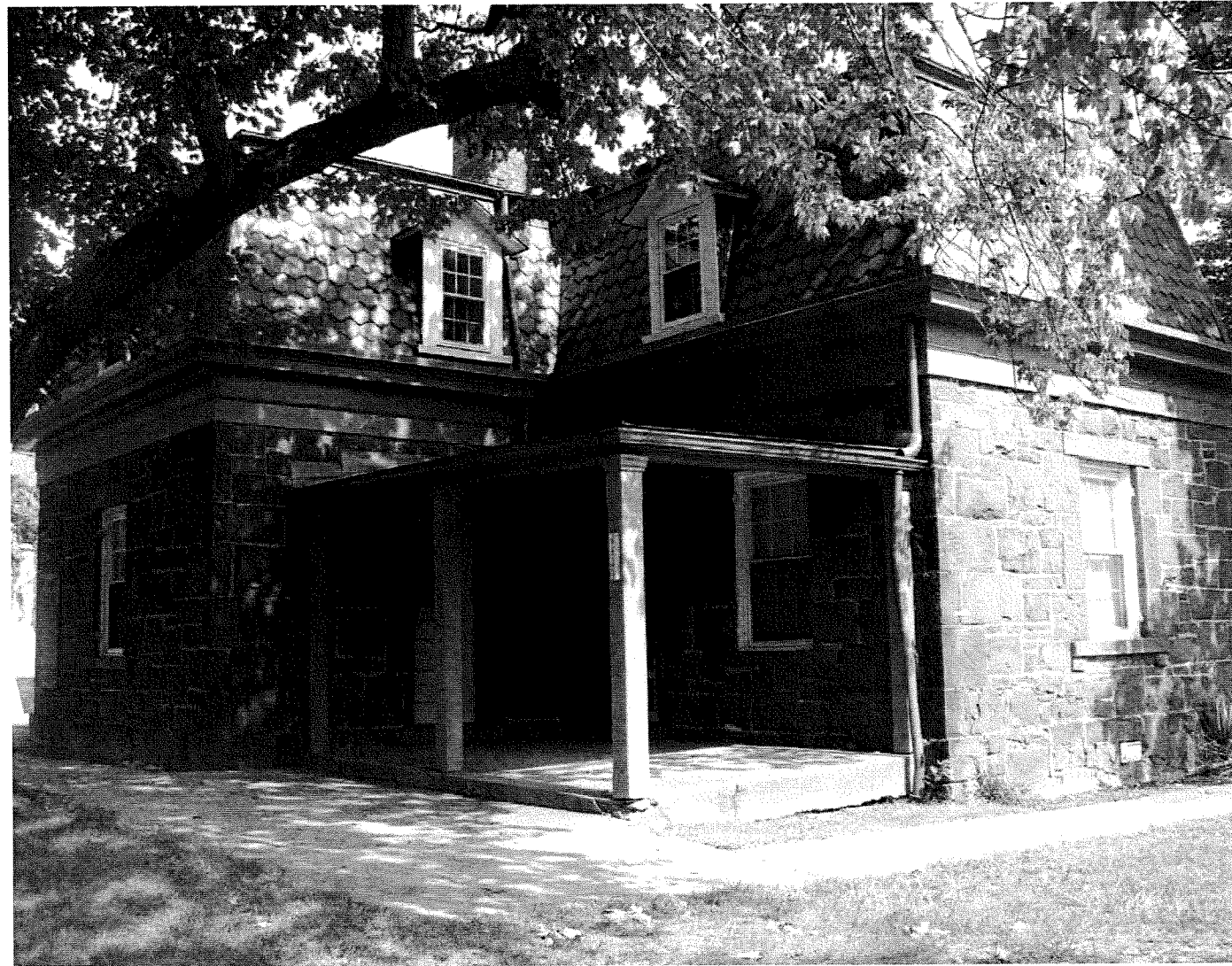
UNITED STATES DEPARTMENT OF THE INTERIOR
NATIONAL PARK SERVICE

**REHABILITATE DETERIORATED BATTLEGROUND NATIONAL
CEMETERY SUPERINTENDENT'S LODGE AND ROSTRUM
PHASE III: LODGE INTERIOR**

6625 GEORGIA AVE NW, WASHINGTON, DC
ROCK CREEK PARK

FINAL SUBMISSION - APRIL 24, 2009

PMIS NO: 026027B
CONTRACT NO: 3000060016
TASK NO: 9
SOLICITATION NO: 1443N2011100011

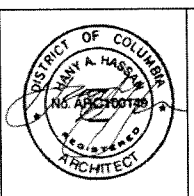


ASBESTOS, LEAD-BASE PAINT

① NOTE: THE GOVERNMENT HAS AVAILABLE A REPORT PREVIOUSLY GENERATED REGARDING EXISTING ASBESTOS-CONTAINING MATERIALS (ACM) AT THE BUILDING NOTED TO BE INCLUDED SELECTIVE DEMOLITION. AS PART OF PHASE II CONTACT THE CONTRACTING OFFICER TO OBTAIN A COPY OF THIS REPORT.

② NOTE: THE LIMITED LEAD BASE PAINT SURVEY REPORT WAS PREVIOUSLY GENERATED AT THIS BUILDING PRIOR TO PHASE II ABATEMENT WORK. CONTACT THE CONTRACTING OFFICER TO OBTAIN A COPY OF THIS REPORT

	RECOMMENDED _____ DATE _____
	CHIEF, BRANCH DESIGN AND CONSTRUCTION _____
	SUPERINTENDENT, PARK _____
	APPROVED _____
REGIONAL DIRECTOR, NATIONAL CAPITAL REGION _____	



A/E FIRM	Mark	Sheet	REVISION	Date	Initial	% SUBMISSION
PRIME/ARCH	1		REVISION 1	10/30/09	SJ	
BEYER BLUNDER BELLE ARCHITECTS AND PLANNERS, LP WASHINGTON, DC						CS-1
COVER SHEET TITLE OF DRAWING						SUB SHEET NUMBER

UNITED STATES DEPARTMENT OF THE INTERIOR NATIONAL PARK SERVICE - NATIONAL CAPITAL REGION BRANCH OF DESIGN AND CONSTRUCTION	BBB REVIEWED ALM JS CHECKED
REHABILITATE DETERIORATED BATTLEGROUND NATIONAL CEMETERY SUPERINTENDENT'S LODGE AND ROSTRUM TITLE OF PROJECT 6625 GEORGIA AVE NW, WASHINGTON, DC LOCATION WITHIN PARK ROCK CREEK PARK NAME OF PARK	858 80010 APRIL 24, 2009 SHEET 1 of 59